



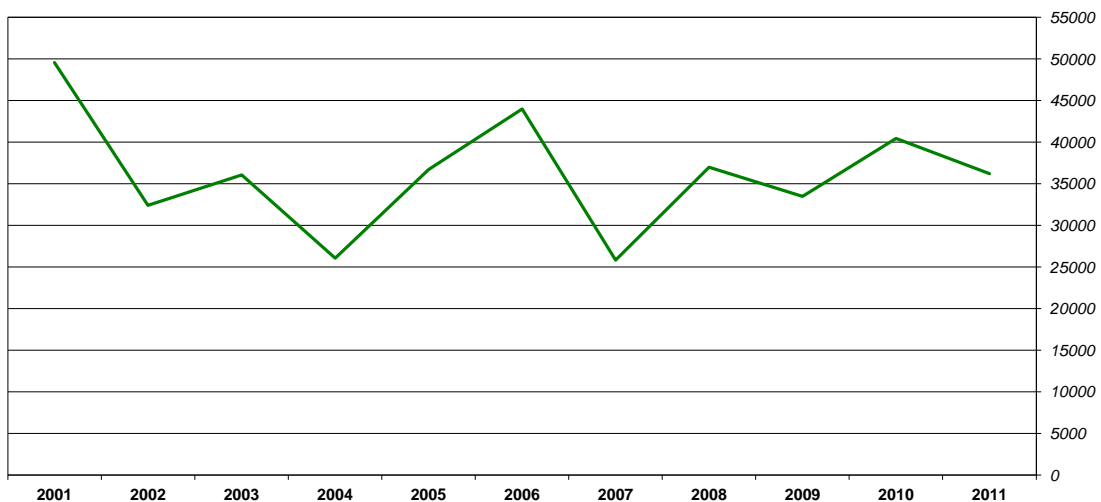
# Gaular Season review 2011

**Overall catch: 36.481 kg (80 427 pounds) - 6254 fish**

**Salmon: 36.225 kg – 6050 fish**

*Released fish: 1457 fish – 23 % of total catch*

**Sea trout: 256 kg – 204 fish (obligatory release)**



# ***Comments to season 2011***

## **Introduction**

The bag net season started on 1 July in the inner, southern part of the Trondheim fjord, while the outer section started on the 8 July. The five year buy-out project ended in 2009.

The river fishery had a daily harvest quota of one salmon, and a season quota of eight salmon, of which four could be above 80 cm. The status of the sea trout stock is so poor that there is a 100 % release on these for a three-year period. A mid-season evaluation was held 21 July to assess to what extent the spawning targets would be met for 2011.

The 2011 season was the first with a obligatory continuous catch reports from all river owners. Unfortunately, this has not worked as expected and approximately 25 % of the catch reports came after the season ended. This is not satisfactory and to be able to conduct a reliable mid-season evaluation this is necessary. Catch reports are important if the river owner organisation shall keep the current regime for managing the river. We therefore hope for understanding and support for this from anglers and riverowners alike.

## **Overall catch**

The total catch, which was strongly dominated by salmon ended at more than 600 salmon weighting in at over 80 000 pounds (36 481 kg). Sea trout catches were insignificant and accounted for only 204 fish. Approximately one of four salmon was released which is less than in 2010. Average weight of salmon was 6 kg while released fish was somewhat less at 5.5 kg. The run of 2011 was dominated by much 2sw salmon, but also many 3sw salmon. Grilse were again few and small, after some improvements in 2010.

There was a fear of much escaped farmed salmon after the disastrous escapes at Hitra outside Trondheim fjord during the winter, and in the early season there were lots of rumours about much escaped farmed salmon being caught, especially on the lower river. In cooperation with the Veterinary Institute all the rivers in the Trondheim area launched the biggest monitoring programme ever to assess the number of escapees in all the rivers including the Gaula. With overwhelming support from the anglers a high number of samples were gathered. In late June, reports from the first analyses rejected that Gaula experienced a higher portion of escaped farmed salmon in the catches than normal. However, we believe that this near "hysteria" in June contributed to the lower release rate in 2011 compared to 2010.

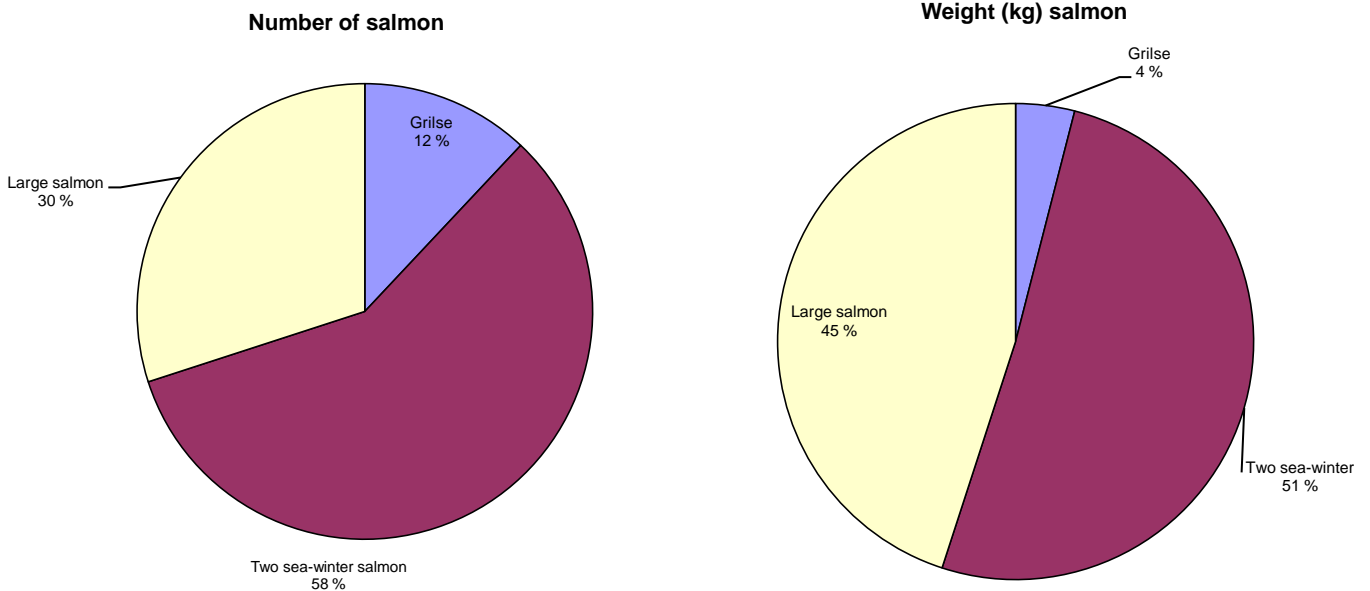
## ***Size of salmon***

The trend with a high average weight, that became especially prominent during the buy-out years, continues. This is due to the late opening of the netting season, that leaves a high number of large salmon pass unhindered through the fjord.

The catch of grilse reached in 2011 what is probably historically low. Large salmon (above 7 kg) contributed with 30 % in number of fish and 45 % of the weight. This is somewhat less than in 2010, but significantly more than pre-2000. Two-seawinter salmon dominated 2011, with nearly 60 % of number of fish which is 45 % of the weight.

12 % of the fish were grilse, which weight-wise is only 4 %, a very worrying result for this stock component.

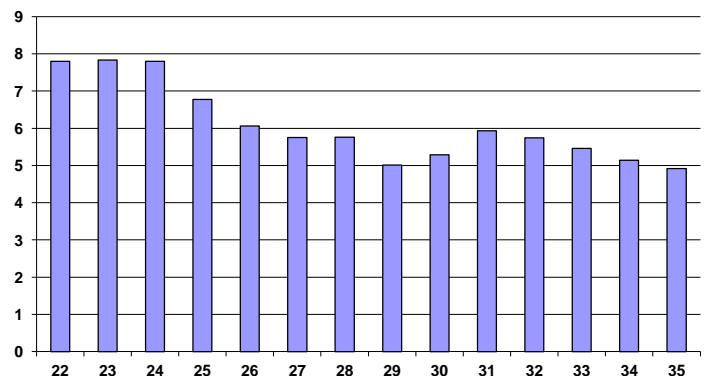
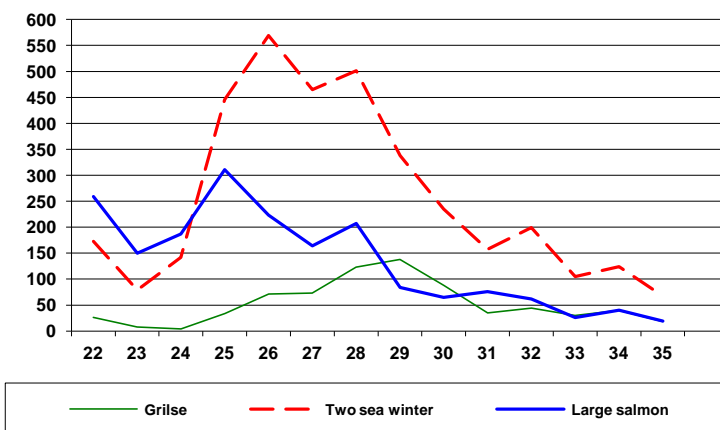
The top-ten list of salmon for 2011 is topped by Arve Nilsen's superb 129 cm male weighting 21.1 kg (47 pounds), fly-caught at the Norwegian Flyfisher's Club beats at Støren. Another fish caught on worm on Røsskraft Søndre at Lundamo were weighted at 20 kgs, while the remaining eight fish were all above 18 kgs (40 pounds).



## Catch throughout the season

Number of salmon per week

Average weight during the season weeks



The season had plenty of water throughout and therefore, catches were quite well distributed. The start of June was a bit slower than the later years, while the run peaked in late June and early July. Fish moved through the Gaulfoss in the second half of June and then gradually spread into the upper reaches as well as into the tributaries. Temperature conditions were also suitable for fish and fishing except for a rather cold start.

## Catch distributed on sections of the river

Zone 1: Sea – Kvåls bridge

Zone 6: Gaula from Fora - border Holtålen

| Zone | Salmon |       |       |       |     | Sea - trout |       |     |       |       |
|------|--------|-------|-------|-------|-----|-------------|-------|-----|-------|-------|
|      | Number | %     | kg    | %     | Av. | Number      | %     | kg  | %     | Av.w. |
| 1    | 674    | 11,1  | 3977  | 11,0  | 5,9 | 49          | 24,0  | 65  | 24,3  | 1,3   |
| 2    | 1765   | 29,2  | 11117 | 30,7  | 6,3 | 36          | 17,6  | 44  | 16,5  | 1,2   |
| 3    | 1246   | 20,6  | 7144  | 19,7  | 5,7 | 62          | 30,4  | 82  | 30,7  | 1,3   |
| 4    | 971    | 16,0  | 5845  | 16,1  | 6,0 | 39          | 19,1  | 48  | 18,0  | 1,2   |
| 5    | 412    | 6,8   | 2522  | 7,0   | 6,1 | 4           | 2,0   | 5   | 1,9   | 1,3   |
| 6    | 315    | 5,2   | 1811  | 5,0   | 5,7 | 6           | 2,9   | 9   | 3,4   | 1,5   |
| 7    | 376    | 6,2   | 2223  | 6,1   | 5,9 | 1           | 0,5   | 1   | 0,4   | 1,0   |
| 8    | 269    | 4,4   | 1471  | 4,1   | 5,5 | 6           | 2,9   | 12  | 4,5   | 2,0   |
| 9    | 22     | 0,4   | 115   | 0,3   | 5,2 | 1           | 0,5   | 1   | 0,4   | 1,0   |
| usp  | 0      | 0,0   | 0     | 0,0   |     | 0           | 0,0   | 0   | 0,0   |       |
|      | 6050   | 100,0 | 36225 | 100,0 | 6,0 | 204         | 100,0 | 267 | 100,0 | 1,3   |

Zone 2: Kvål bridge – Gauffossen

Zone 7: Gaula in Holtålen

Zone 3: Gauffossen – Sokna

Zone 8: Sokna

Zone 4: Gaula between Sokna and Bua

Zone 9: Bua

Zone 5: Gaula between Bua and Fora

## 2011 – another good Gaula season

2011 must be considered a good season, somewhat poorer than 2010, but in line with 2009 and 2008. We believe there are several reasons for this. We hope and believe that the ambitions in our local management of the river are gradually paying its rewards.

1. The buy-out, followed by a significantly shorter netting season in 2010 and 2011 strengthened the survival of large June salmon. We are also now starting to see the results of the stronger spawning stocks from the buy-out years.
2. Strict quotas and increased catch and release strengthen spawning stocks as well as increases the number of large return spawners (salmon that have spawned before). Survival of kelts to return spawners is important and they probably play a more important role with poor marine survival for regular smolts as the kelts are likely more resistant to sea lice and more easily can utilize the huge stocks of mackerel and herring in the Norwegian sea.
3. The fishing conditions during 2011 were good and we avoided the “dry weeks” of late July and early august that we have seen so often lately.

## Spawning targets met

The run of fish had been good when we had our “mid-season” evaluation in mid-July. The board of the river owners therefore decided to continue the remaining part of the season with similar fishing regulations as for the first half. The release of 23 % of the overall catch contributed significantly to the fact that the spawning target for the river was achieved also in 2011.